

Twin Rivers Unified School District

Enrollment and Capacity Overview



Twin Rivers Historical Enrollment Trends

2006 CBEDS

28,527 K-12 Students



2009 CALPADS (CBEDS)

26,673 K-12 Students

**Three Year Enrollment Decline of
1,854 K-12 Students**



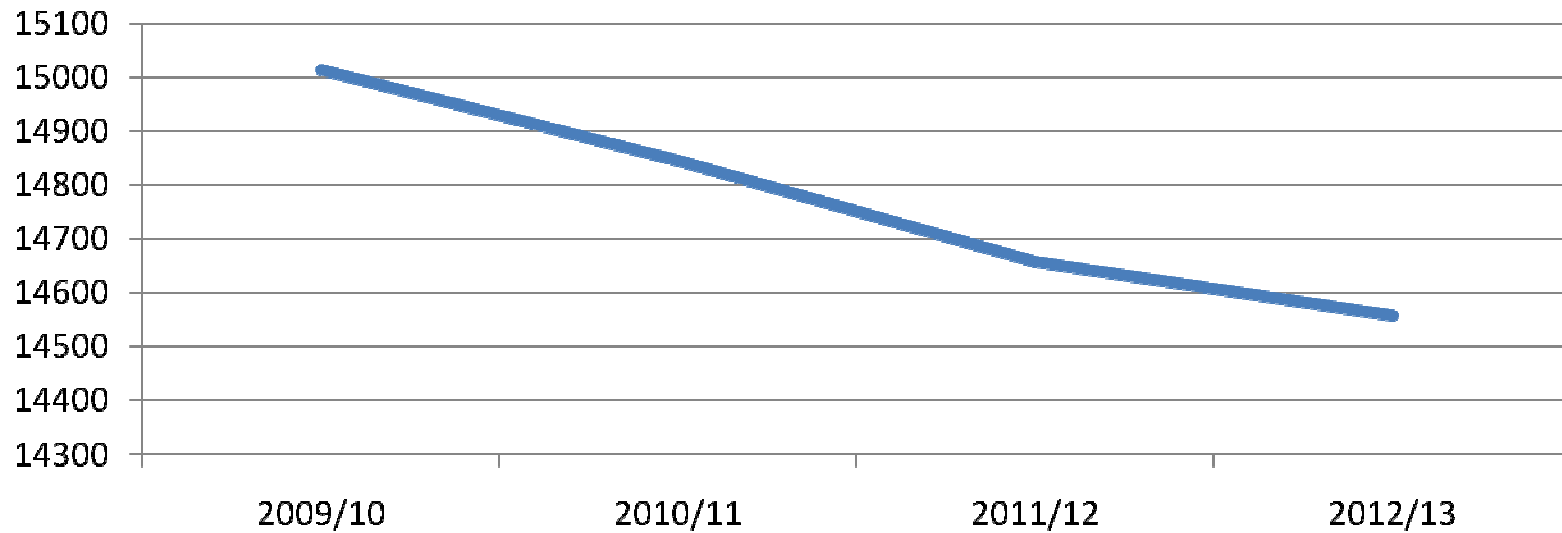
Enrollment Projections

**2009/10 CALPADS
15,015 K-6 students**



**Projected 2012/13
14,559 K-6 students**

Projected 3 Year Decline of 456 K-6 students



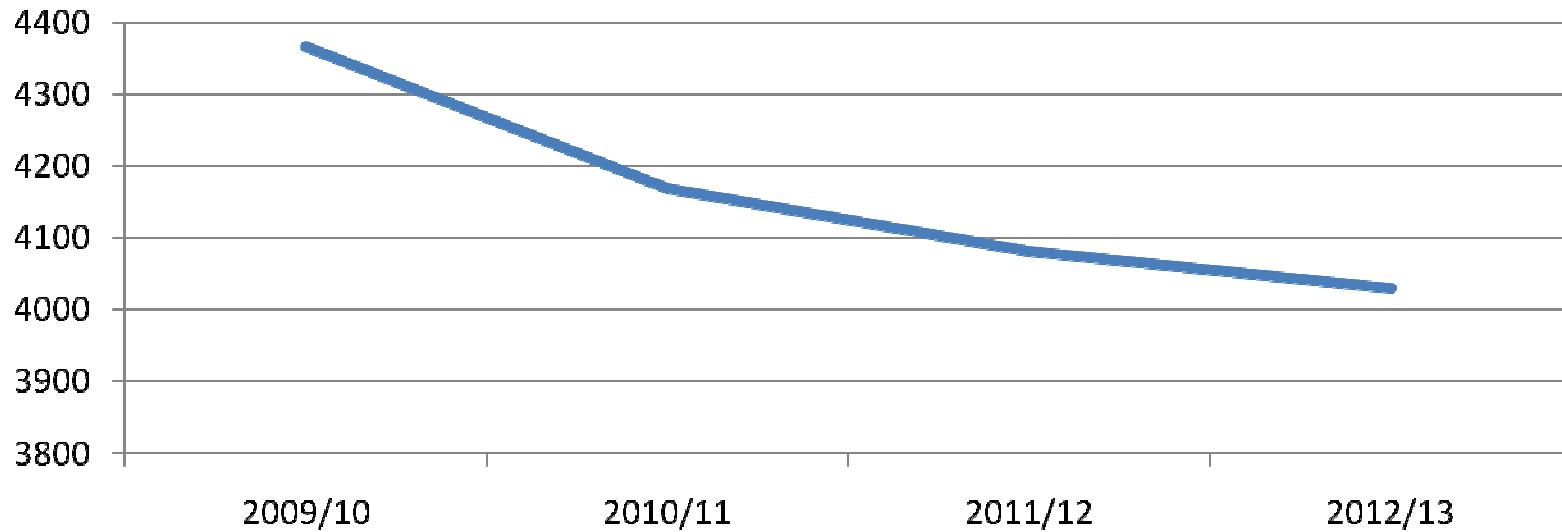
Enrollment Projections

**2009/10 CALPADS
4,368 7-8 students**



**Projected 2012/13
4,030 7-8 students**

Projected 3 Year Decline of 338 7-8 students



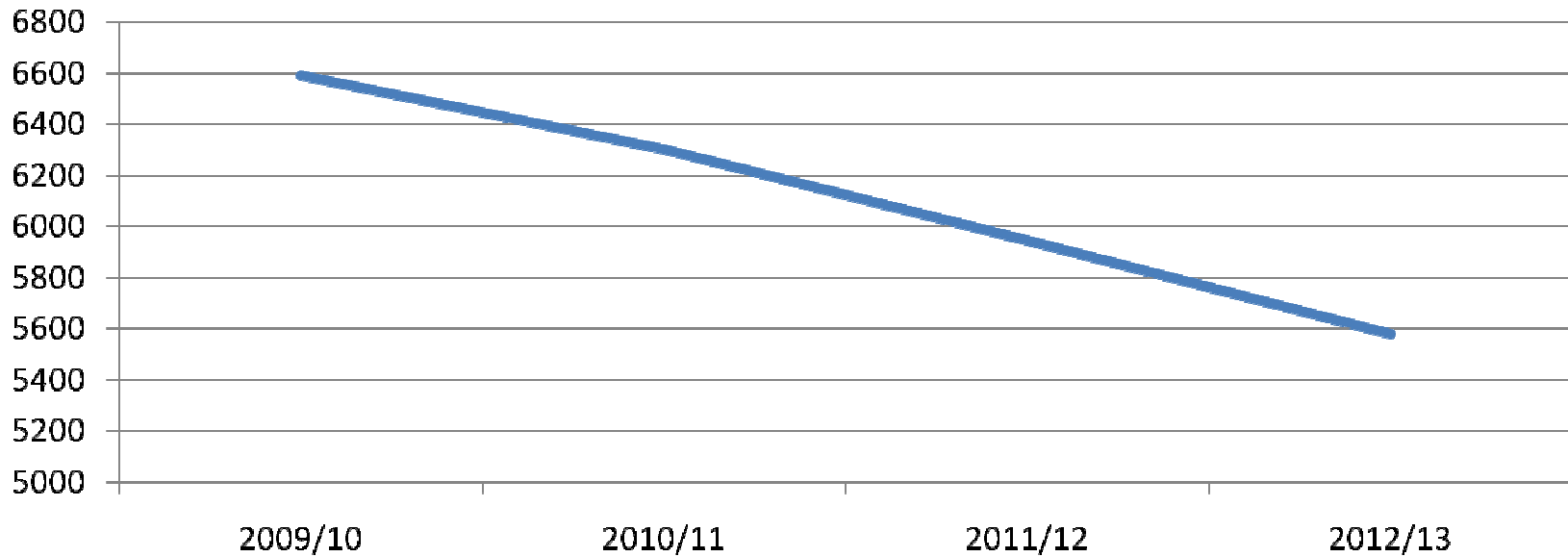
Enrollment Projections

**2009/10 CALPADS
6,591 9-12 students**



**Projected 2012/13
5,578 9-12 students**

Projected 3 Year Decline of 1,013 9-12 students



Twin Rivers Preliminary District-wide Enrollments

2009 CBEDS

26,673 K-12 Students



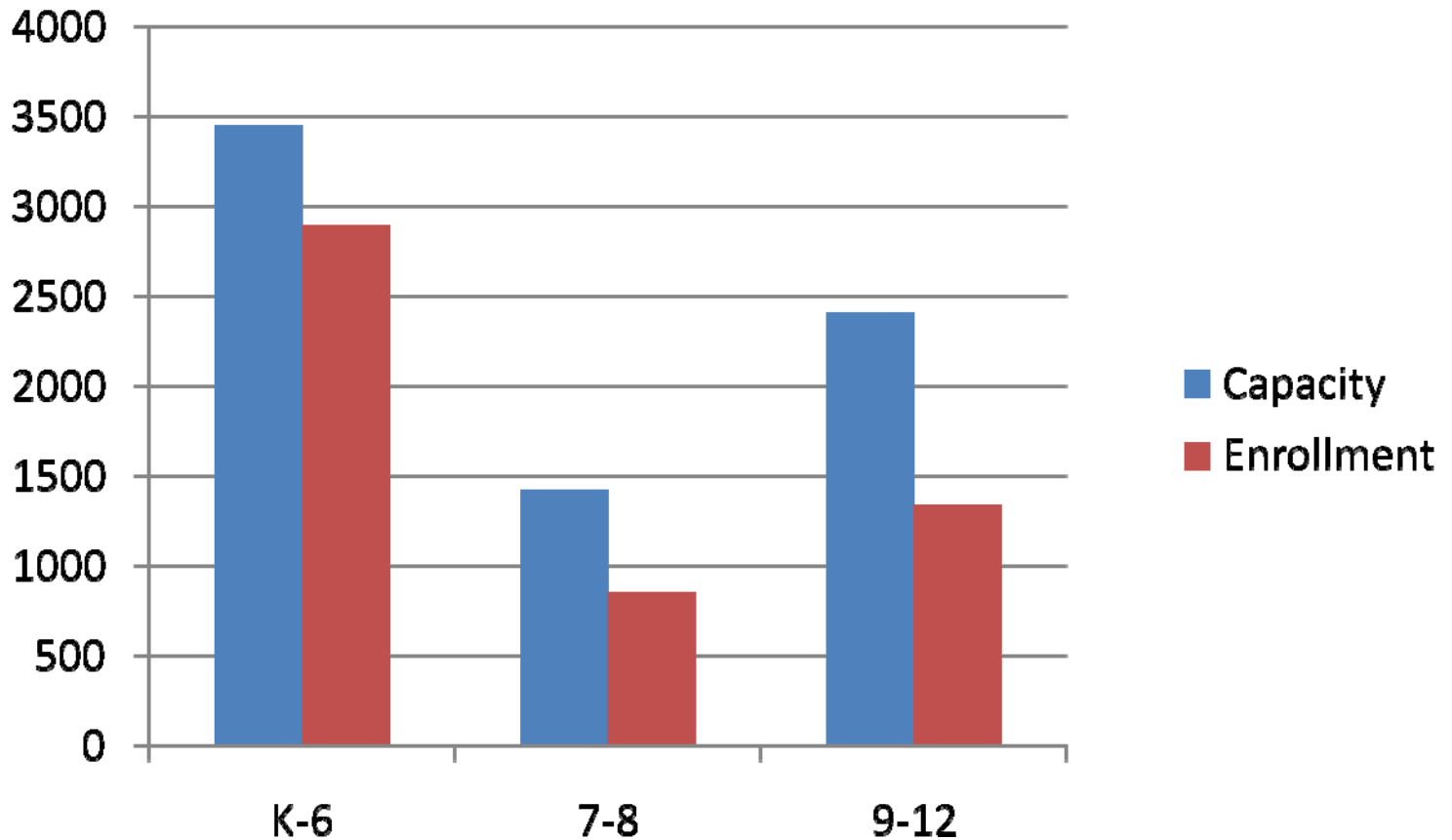
Projected 2012/13

24,167 K-12 Students

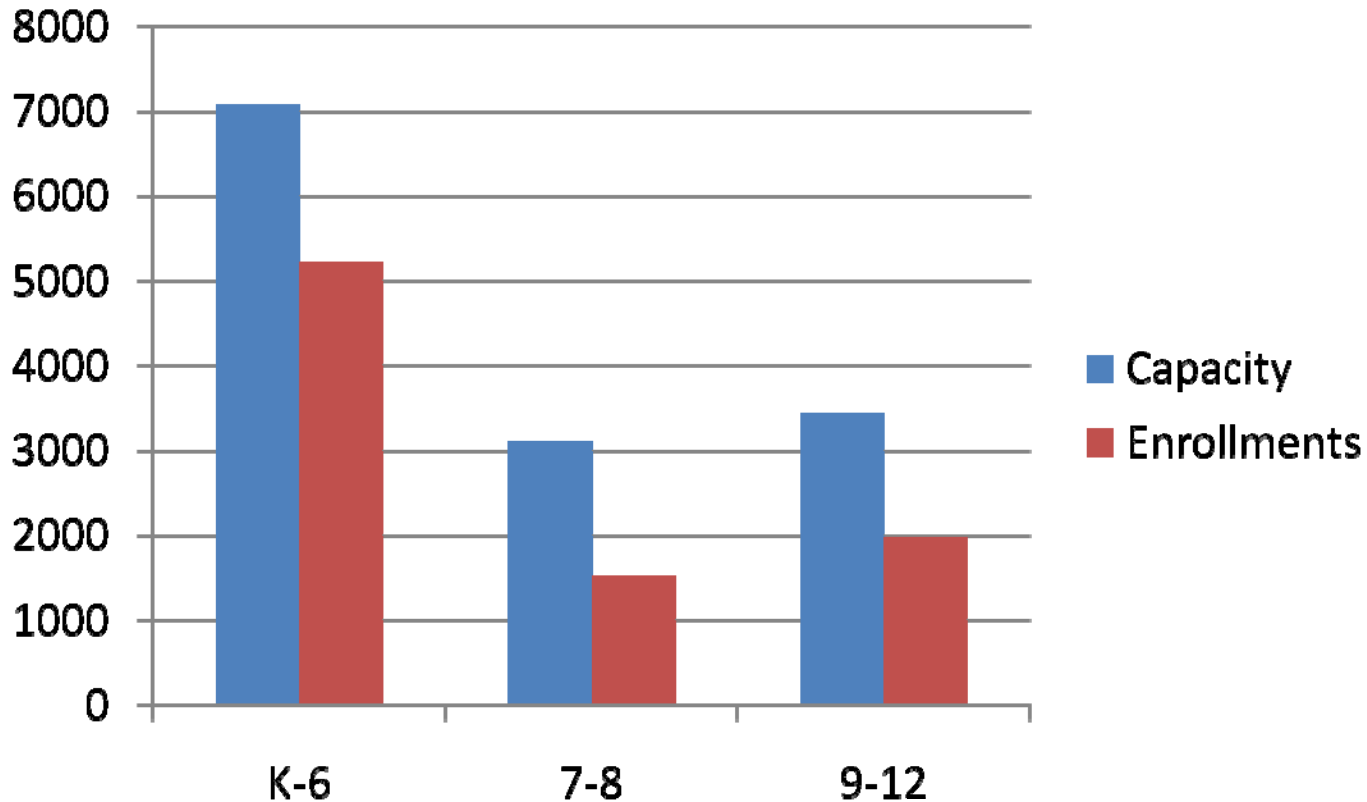
**Three Year Projected Enrollment Decline of
2,506 K-12 Students**



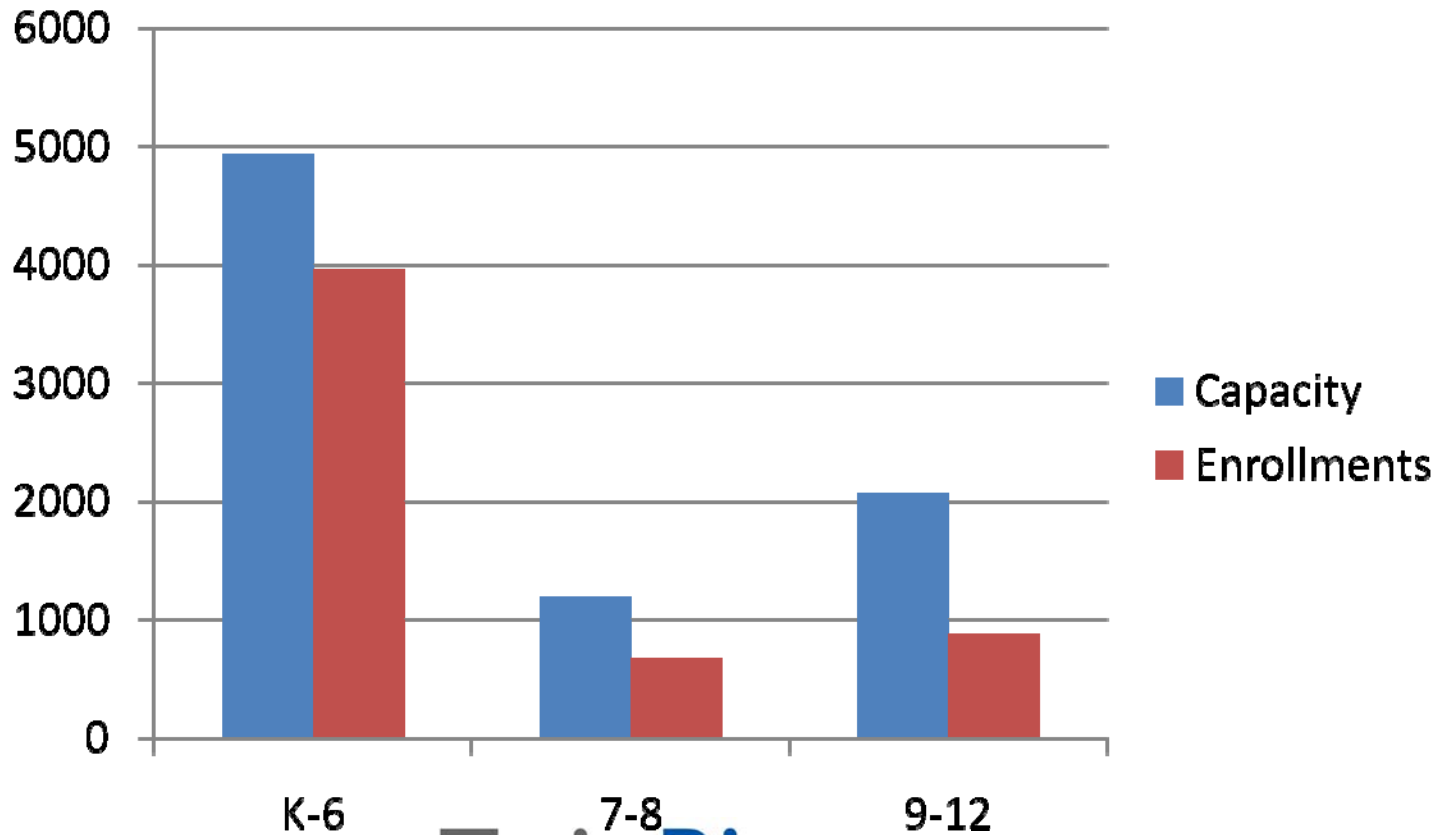
Foothill Attendance Area Capacity and Enrollments for 2009/10



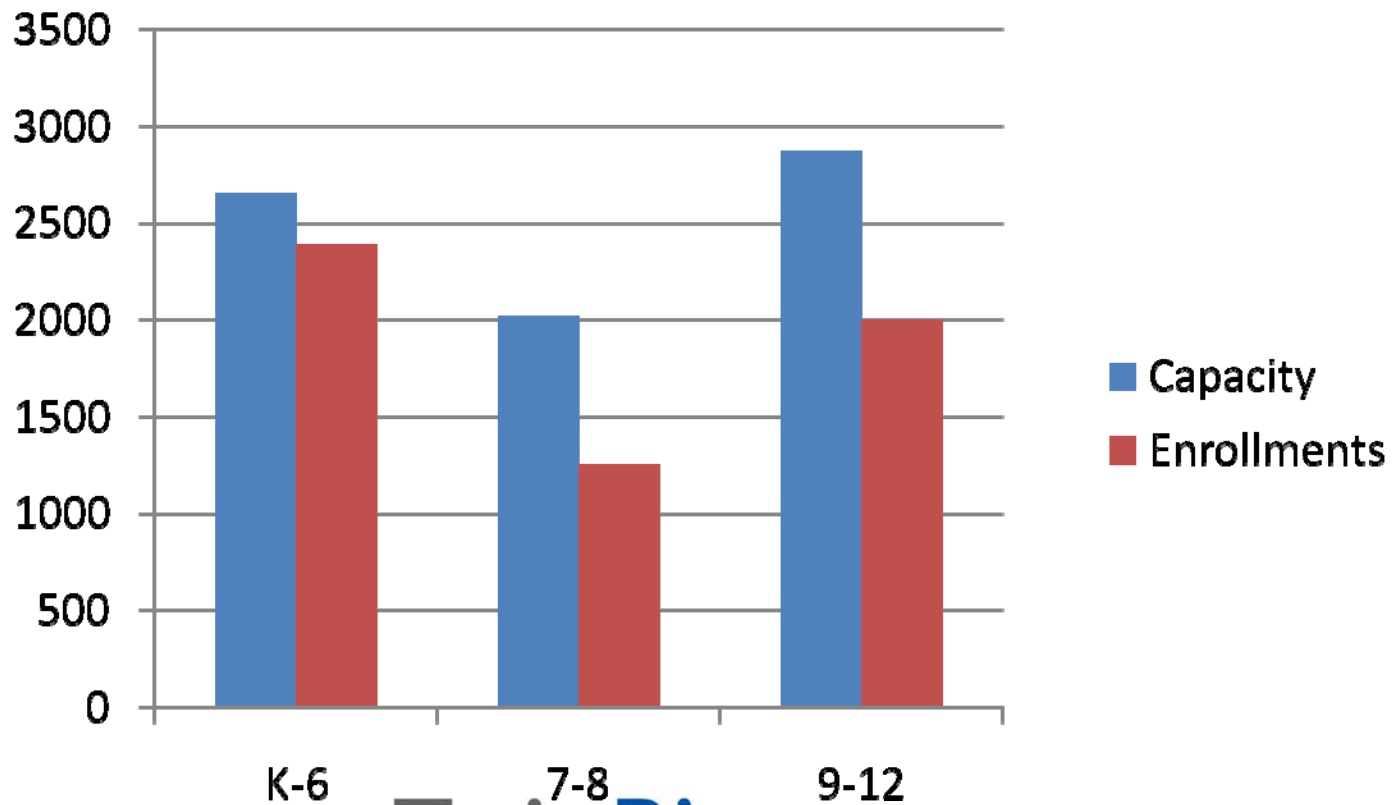
Grant Attendance Area Capacity and Enrollments for 2009/10



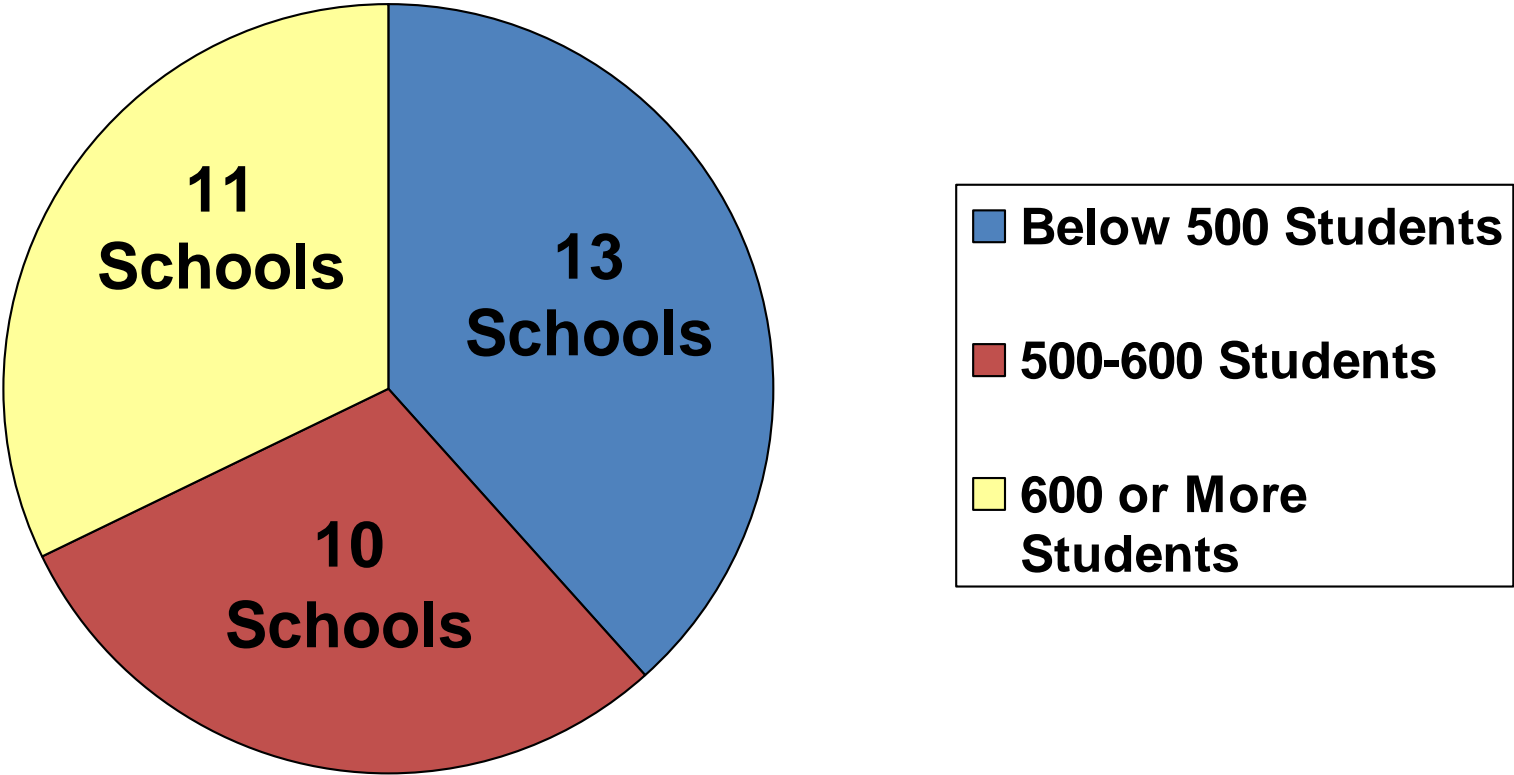
Highlands Attendance Area Capacity and Enrollments for 2009/10



Rio Linda Attendance Area Capacity and Enrollments for 2009/10



Design Capacity of Elementary Schools



Facility Capacity Summary

- TRUSD has 11,000 vacant school desks
 - Vacant desks in every area of district
- Most elementary school enrollments are near design capacity
 - Many small (< 500 students) K-6 schools
- All 7-12 Schools enrollments are significantly below capacity

Summary of Findings

- **TRUSD projects continued declining enrollment**
Declines at every grade level for the next several years
- **TRUSD has under enrolled schools**
Largest vacancies in grade 7-12
- **TRUSD has several small elementary schools**
Over 1 dozen schools designed for < 500 students
- **Reducing the number of elementary schools saves money**
Operational savings for one elementary school \$400,000

